

RITUXAN FOR RA INFUSION KIT

What you should know for your Rituxan infusions

Miss my time
to explore?



Get **6** months of
RA symptom relief
with Rituxan.

« Maria, taking Rituxan since 2006 »

With just 1 course of treatment (2 infusions), Rituxan can provide 6 months of relief by improving your symptoms.

WHAT IS RITUXAN? Rituxan is a prescription medicine used in adults with another medicine called methotrexate to reduce the signs and symptoms of moderately to severely active rheumatoid arthritis (RA) after at least one other medicine called a tumor necrosis factor (TNF) antagonist has been used and did not work well.

People with serious infections should not receive Rituxan.

IMPORTANT SAFETY INFORMATION: Rituxan has been associated with infusion reactions, tumor lysis syndrome, severe skin reactions, and serious infections, including progressive multifocal leukoencephalopathy (PML). For more information, please see the enclosed full Prescribing Information, including Medication Guide.

Rituxan
Rituximab

For Today, and Through 6 Months Away

Welcome to your first Rituxan infusion

In this brochure you'll find some important information about your Rituxan® (rituximab) infusions. Read through it to become more familiar with the process and to learn about what you can expect today and in the future.

If you have not yet scheduled your second infusion, or if you are not sure what day it is scheduled for, be sure to ask your healthcare provider today and write the date below.

My second infusion

My second infusion is scheduled for:



For your convenience, place this Infusion Kit in the rear pocket of your Rituxan Resource Kit.

If you have not already received a Rituxan Resource Kit, ask for a copy from your healthcare provider. Call 1-877-474-8892. Or visit www.Rituxan.com.

A guide to your Rituxan treatment

What should I know for today?

- One course of treatment (2 infusions) can provide 6 months of RA symptom improvement (page 7)
- Why Rituxan is given as an infusion (page 8)
- What to expect for today's infusion (page 11)

What should I expect in the future?

- Scheduling your second infusion (page 14)
- Things to keep in mind for future infusions (page 17)
- What to expect moving forward (page 18)

What resources are available to help me live well with RA?

- The RISE™ (RA Information, Service, and Education) Network (pages 20-23)
- RISE Fitness and Wellness (page 25)
- Going beyond your treatment (pages 26-27)
- How to join RISE (page 28)

How can I learn more about the risks of Rituxan?

- To learn about the risks associated with Rituxan, please see the enclosed full Prescribing Information, including Medication Guide
- Ask your doctor any questions you might have



Kathy, taking Rituxan since 2006

The people featured in this brochure who take Rituxan® (rituximab) are members of the RISE™ Ambassador program, which is sponsored by Genentech USA, Inc. and Biogen Idec Inc. Genentech compensates the Ambassadors for their time and expense while presenting their stories.

Your First Infusion

In this section:

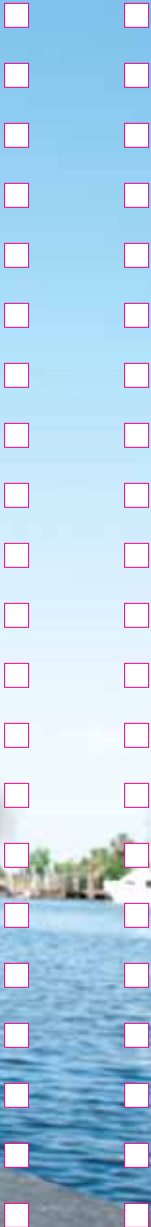
- What you can look forward to with Rituxan
- Why Rituxan is given as an infusion
- What you should be mindful of during your infusion

For important safety information about Rituxan, please see the enclosed full Prescribing Information, including Medication Guide.

“ There’s no way I’m letting RA stop me from hanging out with my friends. ”



Angela, taking Rituxan since 2007



What can I look forward to with Rituxan?

Congratulations on choosing Rituxan® (rituximab). It’s a big step toward saying “No way” to missing out on the things you want to do.

Treating your RA with Rituxan can provide many benefits:

- It can provide *lasting* symptom improvement through 6 months
- It can help you manage your RA for an entire year with as few as 4 infusions
- It can help protect your joints by slowing the damage of RA

Keep in mind that your results with Rituxan may be different.

Common side effects with Rituxan include infusion reactions and infections. For important safety information about Rituxan, please see the enclosed full Prescribing Information, including Medication Guide.

Why is Rituxan given as an infusion?

As you may know, Rituxan® (rituximab) is a type of treatment called a biologic. Biologics are among the most advanced RA treatments, and they're made up of large proteins similar to the ones in your body. Due to the size of these proteins, biologics must be given as an injection or infusion (instead of as a pill). That way, they can enter the bloodstream directly.

If you're not familiar with infusions, here are a few things you should know:

- Infusions are a form of treatment used for a variety of conditions
- They may take more time than other forms of treatment, but with RA they're usually given less often
- Unlike other forms of treatment, infusions are given by a trained healthcare professional who can help manage the process
- Infusion reactions can occur with Rituxan and may include fever, chills and shakes, itching, and coughing. In studies, most were mild and manageable and less than 1% were severe

For important safety information about Rituxan, please see the enclosed full Prescribing Information, including Medication Guide.



“ I talked a lot with my doctor before my infusion about things to watch out for. ”

Amos, taking Rituxan since 2005*

*Amos participated in a Rituxan clinical trial in 2005.

What should I keep in mind during my infusion?

As your healthcare provider may have already told you, today's Rituxan® (rituximab) infusion may last several hours. And you may be given additional medicine to reduce the risk of side effects.

During today's infusion, pay close attention to how you feel. If you experience any discomfort, even anything out of the ordinary, tell your healthcare provider right away. These may be signs of side effects.

Common side effects with Rituxan include:

- fever
- chills and shakes
- itching
- hives
- sneezing
- throat irritation or tightness
- headache
- nausea
- cough

If these occur, it's usually within 24 hours of the first infusion. Although these symptoms may not occur as a result of your Rituxan treatment, if you experience any of these symptoms, it's important to tell your healthcare provider.

“ I’m very excited to be taking Rituxan to slow down the damage to my joints. ”

Julie, taking Rituxan since 2007

In studies, more than half of the people taking Rituxan experienced a clinically significant improvement in RA signs and symptoms (ACR 20 response). Please ask your doctor for more information.

Your Second Infusion and Beyond

In this section:

- Scheduling your next infusion
- What to keep in mind for future infusions
- How soon can you expect results?

Side effects with Rituxan® (rituximab) include hepatitis B virus reactivation, heart problems, and infections.

For important safety information about Rituxan, please see the enclosed full Prescribing Information, including Medication Guide.

When is my next infusion?

With Rituxan® (rituximab), 1 course of treatment consists of 2 infusions. If today is the first of your 2 infusions, your second infusion should be scheduled for 2 weeks from today. After your second infusion, you can look forward to RA symptom improvement that can last through 6 months.

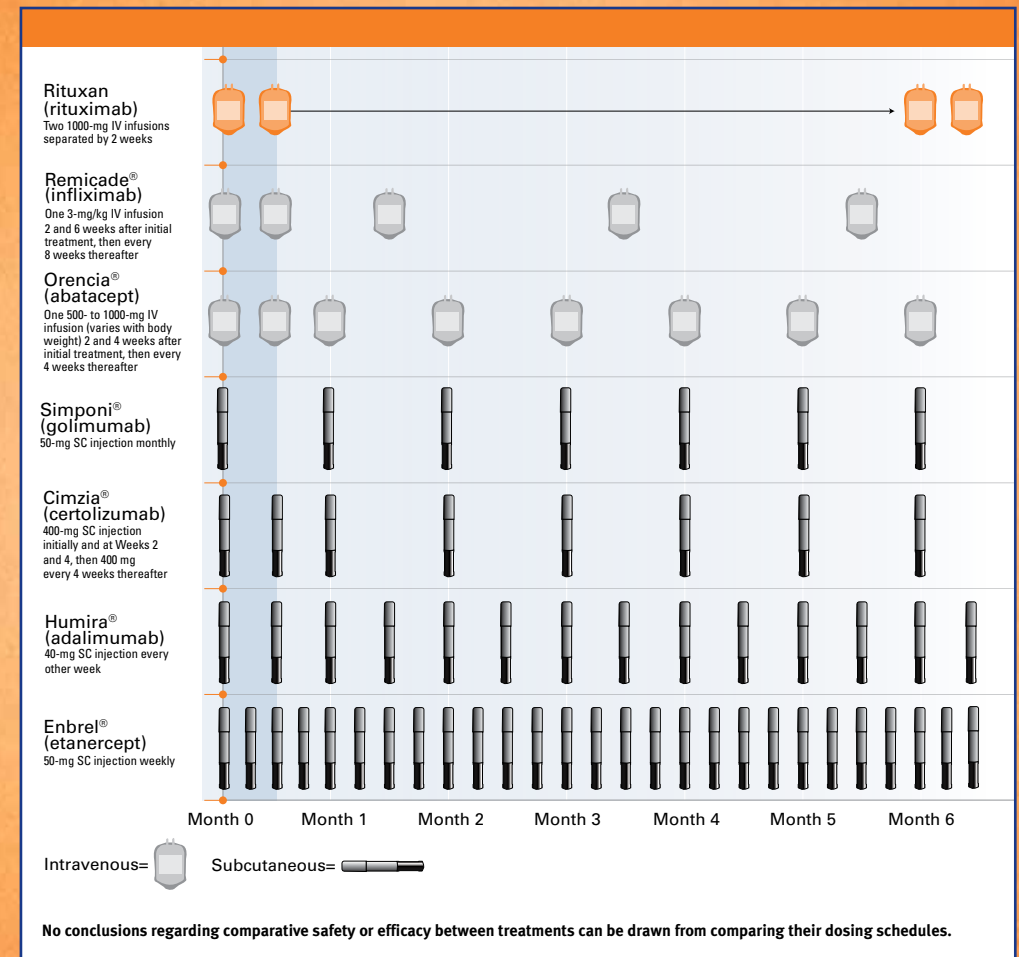
For important safety information about Rituxan, including possible infusion reactions, please see the enclosed full Prescribing Information, including Medication Guide.

If you have not yet scheduled your second infusion, or if you are not sure what day it is scheduled for, be sure to ask your healthcare provider today and write the date in the space provided on the inside front cover of this guide.

With Rituxan, you could manage your RA for an entire year with as few as 4 infusions.

Rituxan in combination with methotrexate is indicated for the treatment of adult patients with moderately to severely active rheumatoid arthritis who have had an inadequate response to one or more TNF antagonist therapies.

Dosing schedules of biologic treatments



Please see respective prescribing information for dosing considerations for each product. All trademarks are the property of their respective owners. Data derived from full prescribing information for Rituxan, Remicade, Orenzia, Simponi, Cimzia, Humira, and Enbrel.



← Maria, taking Rituxan since 2006

What should I keep in mind at future infusions?



Remember to set aside enough time—Your second infusion may take slightly less time than your first, but it will still last several hours, so make sure you set aside enough time in your day.



Be mindful of how you feel—Even if you didn't experience any side effects from previous infusions, you should still be mindful of how you feel during your current infusion.



Bring activities—Next time you may want to take activities such as crossword puzzles or a book to read to help you pass the time.



Eating and drinking—There are no special rules about what you should eat or drink before an infusion. You may, however, be at the infusion facility for most of the day. So you may want to take some snacks or pack a meal.



Tell your doctor or nurse about medicines you may be taking—As always, remember to let your doctor or nurse know about any medications you are currently taking, such as blood pressure medicine.



Review the Medication Guide—Before any infusion, remember to review the enclosed Medication Guide and ask your doctor any questions you may have.

How soon can I expect results from Rituxan, and how long will they last?

In clinical trials, many people taking Rituxan® (rituximab) experienced symptom improvement just 2 weeks after their first course of treatment (2 infusions).

In clinical trials, some Rituxan patients experienced symptom improvement just 2 weeks after their first course of treatment.

These patients were also treated with methotrexate and methylprednisolone prior to infusion, which may have influenced results at 2 weeks. However, Rituxan patients showed better symptom improvement than non-Rituxan patients at 8 weeks. And with many, that improvement lasted through 6 months.

The benefits can go beyond 6 months. Studies have shown that if you continue to take Rituxan, it can continue to provide that same symptom improvement.

You should know that Rituxan may increase your risk of infection. Tell your healthcare provider if you experience a nagging cough, fever, chills, congestion, or any flu-like symptoms. For more information, please see the enclosed full Prescribing Information, including Medication Guide.



Bobbi, taking Rituxan since 2007

“Can I be treated earlier than 6 months if I need to be?”

Rituxan is generally given every 6 months. But it's important to know that if your symptoms return before it's time for your next course, you may be retreated earlier. Rituxan offers you and your rheumatologist the flexibility to treat again in as early as 4 months. So you don't have to put up with the pain and symptoms of RA. Based on your symptoms and other medical conditions, you and your doctor will determine when you should start your next course of treatment.

“ As a member of RISE, you’ll be part of a special network dedicated to improving the lives of people with RA. ”



Manette LaChance
RISE Fitness and Wellness Expert

The *RISE*[™] Network

In this section:

- RISE (RA Information, Service, and Education) resources for managing your RA
- RISE fitness and wellness
- Going beyond your treatment

Resources for financial assistance

There are 3 important programs that can play a vital role in helping you get the Rituxan® (rituximab) treatment you need:



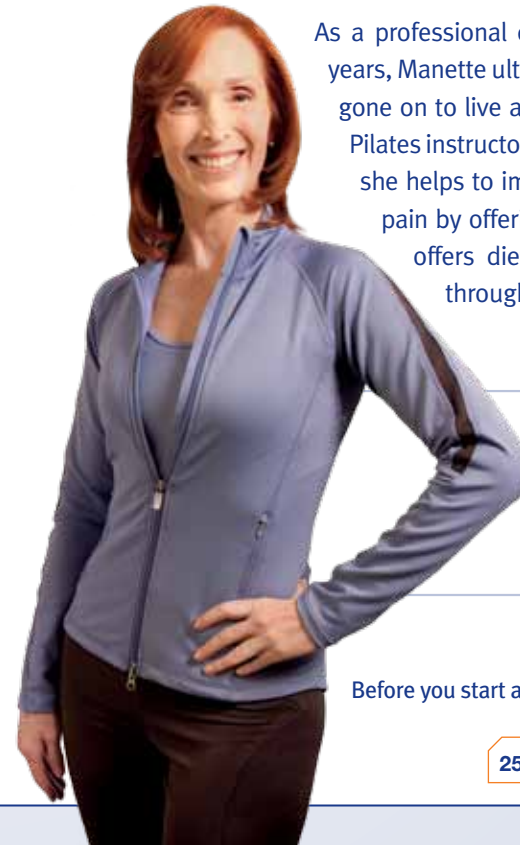
Genentech Rheumatology Access Solutions™—helps patients with insurance coverage and reimbursement issues.



Rituxan for RA Experience Program—helps eligible patients with their copays.

Genentech® Access to Care Foundation (GATCF)—helps patients who are uninsured or denied coverage obtain treatment if they meet certain medical and financial criteria.

Meet Manette LaChance— RISE Fitness & Wellness Expert



As a professional dancer who battled chronic pain for many years, Manette ultimately gained control over her pain and has gone on to live an extremely active life. Today, as a certified Pilates instructor and the RISE™ Fitness and Wellness Expert, she helps to improve the lives of others who have chronic pain by offering her unique exercise programs. She also offers diet and other wellness advice, all available through RISE.

To receive special fitness and wellness advice for people living with RA, simply fill out and mail in the card at the end of this section.

Before you start any exercise program, be sure to consult your doctor.

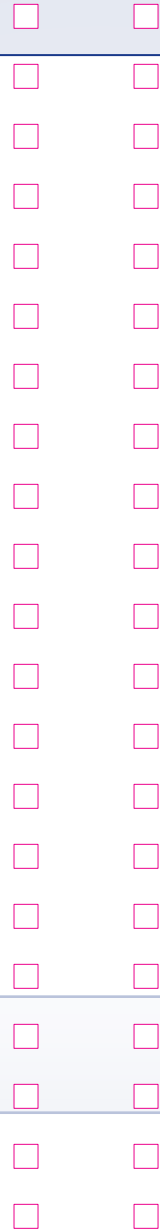
Going beyond your treatment

When it comes to managing RA, treatment comes first. But there is a variety of resources that can complement your treatment to help you live well with RA.



On the RISE newsletter

On the RISE newsletter—helps you stay informed about the world of RA. Each issue focuses on a topic that's current and relevant to people living with RA and offers unique perspectives from some key opinion leaders in the RA community.



Live events, Webcasts, and teleconferences

Educational RISE™ events—these special events feature a select lineup of RA experts who provide information and insight for people living with RA. You can attend in person, online, or over the phone.



RISEsupport.com

RISEsupport.com—a central resource for the RISE program that keeps you informed of special events, resources, and benefits for RISE members. Plus, you'll get Manette LaChance's Wellness column featuring tips on exercise, diet, and general wellness.

To join RISE, please call 1-877-474-8892, visit www.RISEsupport.com, or fill out the card at the end of this brochure.

Get started today

Join RISE™ today and get started with the first of your support materials, including:

- Additional RA wellness guidance
- A complimentary subscription to the *On the RISE* newsletter

Just fill out the attached enrollment form to become a RISE member today, call **1-877-474-8892**, or visit **www.RISEsupport.com**.



JOIN RISE™ TODAY

Simply fill in the information requested below, then detach the postage-paid questionnaire and drop it in the mail.

Contact information (*required fields)

*Name _____
first last title (eg, Mr, Mrs, Ms)

*Address _____
street address

_____ city state zip

Phone (____) _____ E-mail _____

Questions? Call 1-877-474-8892 or visit www.Rituxan.com.

Condition information

1. Have you, or someone you know or care for, been diagnosed with RA? Yes No

If you answered "Yes" to the previous question, please respond to the following questions as they relate to the person who was diagnosed with RA. Otherwise, you may skip the remaining questions.

2. What is your relationship to the person with RA?

- I am the person Spouse/significant other Healthcare professional
 Relative Friend Other

MIRTF8951

Moisten, fold, seal, and mail back.

3. What is the person's date of birth? _____/_____/_____(mm/dd/yy)

4. How has the person's RA been characterized by his or her doctor?

- Mild Moderate
 Severe Not sure

5. Please indicate which of the following treatments the person is currently receiving or has previously received for RA. Check all that apply. (All trademarks are the property of their respective owners.)

	Currently receiving	Previously received		Currently receiving	Previously received
Cimzia® (certolizumab pegol)	<input type="checkbox"/>	<input type="checkbox"/>	Orencia® (abatacept)	<input type="checkbox"/>	<input type="checkbox"/>
Enbrel® (etanercept)	<input type="checkbox"/>	<input type="checkbox"/>	Remicade® (infliximab)	<input type="checkbox"/>	<input type="checkbox"/>
Humira® (adalimumab)	<input type="checkbox"/>	<input type="checkbox"/>	Rituxan® (rituximab)	<input type="checkbox"/>	<input type="checkbox"/>
Kineret® (anakinra)	<input type="checkbox"/>	<input type="checkbox"/>	Simponi® (golimumab)	<input type="checkbox"/>	<input type="checkbox"/>

6. Please indicate how strongly the person with RA would agree or disagree with each of the following statements. Check one box for each statement. (1 = completely disagrees, 5 = completely agrees)

"My RA prevents me from spending time with my friends or family."

1 2 3 4 5

"The reason I won't try a new medication for RA is that I am afraid of long-term side effects."

1 2 3 4 5

"I am completely satisfied that my current RA treatment relieves my pain."

1 2 3 4 5

"I frequently offer suggestions about managing RA to others who have the disease."

1 2 3 4 5

Privacy Information

Genentech, Inc. and Biogen Idec Inc. respect your right to have your personal and health information kept private. We may use your information to send you materials that may be of interest to you. We and the companies that work with us to provide these materials will only use and share your information in accordance with our Privacy Policy.

By submitting this form, you agree to allow Genentech, Inc., Biogen Idec Inc., and their agents to collect the information provided, to receive communications that are relevant to your condition from Genentech, Inc., Biogen Idec Inc., and their agents, and to the terms of our Privacy Policy. Please read our complete Privacy Policy at www.Rituxan.com to learn more about our use of your information.

For important safety information, please see the enclosed full Prescribing Information, including Medication Guide.

Moisten, fold, seal, and mail back.

Moisten, fold, seal, and mail back.

Tear along dotted line.

RISE™
and shine.



Take advantage of the many RISE resources available to you and...

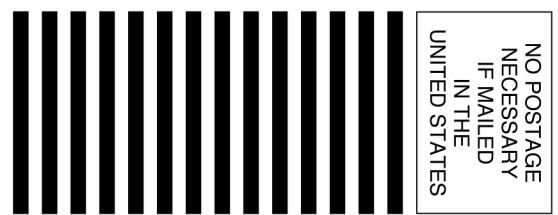
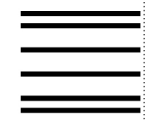
receive a complimentary subscription to our *On the RISE* newsletter.



BUSINESS REPLY MAIL
FIRST-CLASS MAIL PERMIT NO. 91 WOBURN MA

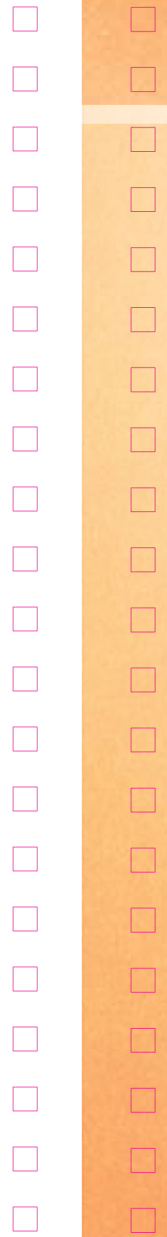
POSTAGE WILL BE PAID BY ADDRESSEE

GENENTECH BIOGEN IDEC INC
PO BOX 4016
WOBURN MA 01888-9920



NO POSTAGE
NECESSARY
IF MAILED
IN THE
UNITED STATES

Tear along dotted line.



See inside for:

- What you should know for today's infusion
- Things to look forward to in the months ahead
- Resources to help you live well with RA
- Important safety information

For more information, please see the enclosed full Prescribing Information, including Medication Guide.

